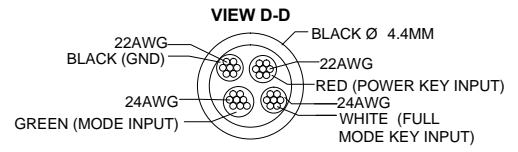
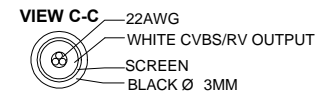
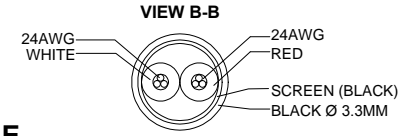
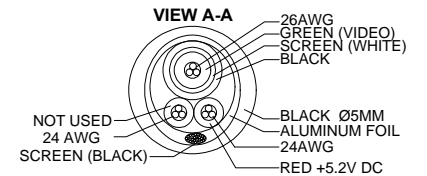
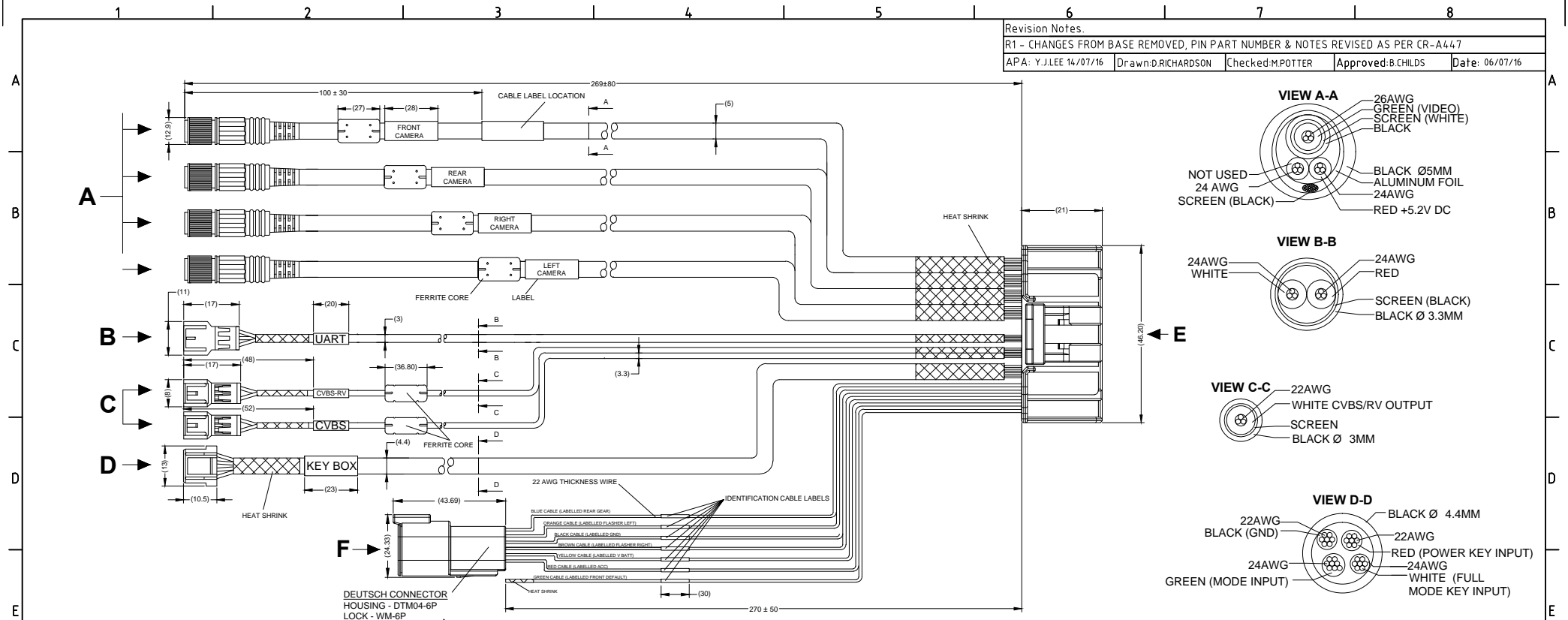


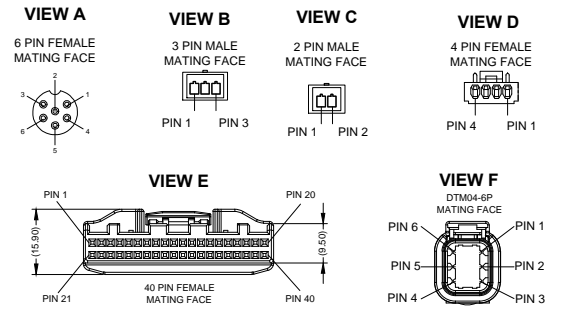
Revision Notes:
 R1 - CHANGES FROM BASE REMOVED, PIN PART NUMBER & NOTES REVISED AS PER CR-A447
 APA: Y.J.LEE 14/07/16 Drawn:D.RICHARDSON Checked:MPOTTER Approved:B.CHILDS Date: 06/07/16



'VIEW E' CONNECTION MATRIX

PIN NUMBER	1	2	3	4	5	6	7	8	9	10	11	12	13	14	15	16	17	18	19	20
LEFT CAM	-	-	-	-	-	-	-	-	-	-	-	-	6	3	-	-	-	-	-	-
RIGHT CAM	-	-	-	-	-	-	-	-	-	-	-	-	-	-	6	3	-	-	-	-
REAR CAM	-	-	-	-	-	-	-	-	-	-	-	-	-	-	-	-	6	3	-	-
FRONT CAM	-	-	-	-	-	-	-	-	-	-	-	-	-	-	-	-	-	-	6	3
CVBS	-	-	-	-	-	-	-	-	2	1	-	-	-	-	-	-	-	-	-	-
CVBS-RV	-	-	-	-	-	-	-	-	-	-	2	1	-	-	-	-	-	-	-	-
UART	-	-	-	-	-	-	-	-	-	-	-	-	2	1	-	-	-	-	-	-
KEY BOX	-	-	-	-	-	-	-	-	-	-	-	-	-	-	-	-	-	-	-	-
DEUTSCH	3	-	-	2	5	4	6	-	-	-	-	-	-	-	-	-	-	-	-	-
CABLES	BLACK	-	-	RED	BROWN	ORANGE	BLUE	GREEN	BLACK	WHITE	BLACK	WHITE	WHITE	GREEN	WHITE	GREEN	WHITE	GREEN	WHITE	GREEN
DESCRIPTION	GROUND	-	-	IGN 12-24V + DC	FLASHER RIGHT	FLASHER LEFT	REVERSE GEAR	SPEED PULSE	CVBS	CVBS-RV	CVBS-RV	LEFT CAM	LEFT CAM	RIGHT CAM	RIGHT CAM	REAR CAM	REAR CAM	FRONT CAM	FRONT CAM	

PIN NUMBER	21	22	23	24	25	26	27	28	29	30	31	32	33	34	35	36	37	38	39	40
LEFT CAM	-	-	-	-	-	-	-	-	-	-	-	-	6	2	-	-	-	-	-	-
RIGHT CAM	-	-	-	-	-	-	-	-	-	-	-	-	-	-	6	2	-	-	-	-
REAR CAM	-	-	-	-	-	-	-	-	-	-	-	-	-	-	-	-	6	2	-	-
FRONT CAM	-	-	-	-	-	-	-	-	-	-	-	-	-	-	-	-	-	6	2	-
CVBS	-	-	-	-	-	-	-	-	-	-	-	-	-	-	-	-	-	-	-	-
CVBS-RV	-	-	-	-	-	-	-	-	-	-	-	-	-	-	-	-	-	-	-	-
UART	-	-	-	-	-	-	-	-	-	1	2	3	-	-	-	-	-	-	-	-
KEY BOX	-	-	-	-	4	3	2	1	-	-	-	-	-	-	-	-	-	-	-	-
DEUTSCH	1	-	-	-	-	-	-	-	-	-	-	-	-	-	-	-	-	-	-	-
CABLES	YELLOW	-	-	-	BLACK	WHITE	GREEN	RED	RED	WHITE	BLACK	-	BLACK	RED	BLACK	RED	BLACK	RED	BLACK	RED
DESCRIPTION	12-24V DC	-	-	-	KEY BOX	KEY BOX	KEY BOX	KEY BOX	UART	UART	UART	-	LEFT CAM	LEFT CAM	RIGHT CAM	RIGHT CAM	REAR CAM	REAR CAM	FRONT CAM	FRONT CAM



- NOTES
- HEAT SHRINK LABELING IS FREE TO MOVE ON CABLE AND CONTROLLED BY MANUFACTURE
 - FOR CABLE LABEL REFER TO LATEST REVISION OF DRAWING BE-002644-XX-13
 - FOR CONNECTOR F DETAILS REFER TO CONNECTOR MANUFACTURERS DETAIL
 - WHEN SUPPLIED AS A SPARE PART, TO BE SUPPLIED IN A TRANSPARENT 100mmx35mm PRESS SEAL BAG
 - WHEN SUPPLIED AS A SPARE PART, FOR GIFTBOX LABEL REFER TO LATEST REVISION OF DRAWING BE-002640-XX-13

PROPRIETARY NOTICE
 THIS DESIGN AND TECHNICAL INFORMATION APPEARING ON THIS DRAWING IS THE PROPERTY OF BRIGADE ELECTRONICS, AND IS DISCLOSED IN CONFIDENCE. IT IS NOT TO BE COPIED, REPRODUCED, REVEALED TO OR EXPROPRIATED BY OTHERS, EITHER IN WHOLE OR IN PART WITHOUT THE EXPRESS WRITTEN CONSENT OF BRIGADE ELECTRONICS.

Customer Approval LABDALLA 09/05/16	Assembly Pl Approval S.ATTWOOD (06/05/16)	Approved by B.CHILDS	Checked by R.BATES	Released 09/05/16	Drawn by D.RICHARDSON
Angle of Projection Third Angle		Units mm	Scale N/A	Status RELEASED	Assembly Ref BN360-10H-01(DTM)
Part No 5089		BE-003351-01-16			